

Viewing Rooms

Our ten viewing rooms and private meeting rooms located between our three facilities are secure and climate-controlled with customizable lighting. Ranging in size from 250 to 1,200 square feet, they provide elegant, pristine conditions for private viewings, conservation work, photography shoots, inventory cataloguing, special events, long-term installations, and private meetings.



Viewing Room 1

Room Dimensions

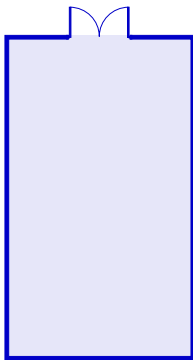
Height: 10' 5 1/2"
Length: 13' 5 1/2"
Width: 22' 8 1/2"

Swing Door

Height: 9' 10 1/2"
Width: 2' 8"
Diagonal: 10' 3"

Sliding Door

Height: 7' 10 1/2"
Width: 3' 4 1/2"
Diagonal: 8' 6"



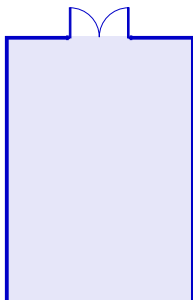
Viewing Room 2

Room Dimensions

Height: 13' 11"
Length: 33' 4"
Width: 18' 4 1/2"

Swing Doors

Height: 9' 10"
Width: 5' 8"
Diagonal: 11' 2 1/2"



Viewing Room 3

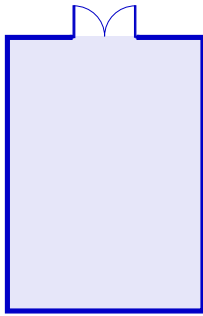
Room Dimensions

Height: 12' 6"
Length: 26' 4"
Width: 18' 3 1/2"

Swing Doors

Height: 9' 10"
Width: 5' 8"
Diagonal: 11' 2 1/2"

Viewing Rooms



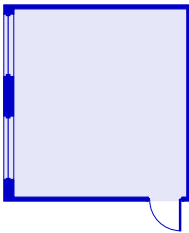
Viewing Room 4

Room Dimensions

Height: 12'5 1/2"
 Length: 25'9"
 Width: 18'4 1/2"

Swing Doors

Height: 9'10"
 Width: 5'8"
 Diagonal: 11'3 1/2"



Viewing Room 5

Room Dimensions

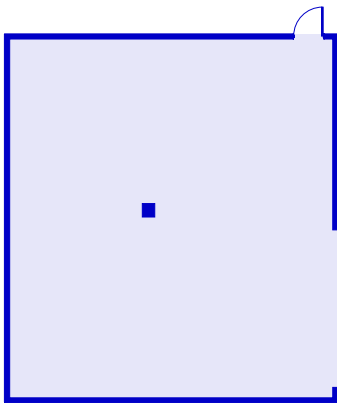
Height: 11'1"
 Length: 18'0"
 Width: 16'6 1/2"

Swing Door

Height: 9'11"
 Width: 2'10"
 Diagonal: 10'3 1/2"

Window

Height: 5'10"
 Width: 6'4"



Viewing Room 6

Room Dimensions

Height: 16' 7"
 Length: 36' 4"
 Width: 32' 8"

Swing Door

Height: 9' 11"
 Width: 2' 10 1/2"
 Diagonal: 10' 3 1/2"

Sliding Door

Height: 16' 0"
 Width: 15' 11"
 Diagonal: 22' 6"

Viewing Rooms

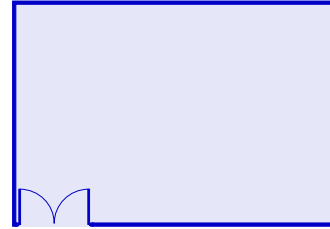
33 Kings HWY Viewing Room

Room Dimensions

Height: 17' 8"
Length: 18' 6"
Width: 26' 10"

Swing Doors

Height: 11' 11"
Width: 5' 11"
Diagonal: 13' 1"



Bradley Viewing Room

Room Dimensions

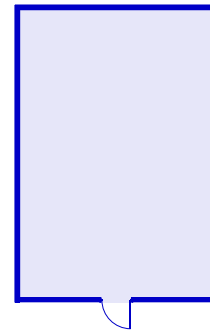
Height: 16' 0"
Length: 30' 1"
Width: 20' 1.5"

Swing Door

Height: 7' 11.5"
Width: 2' 10.5"
Diagonal: 8' 6"

Barn Door

Height: 14' 0"
Width: 9' 6.5"
Diagonal: 16' 11"



Private Events

UOVO presents a unique venue for hosting your event in a pristine, spacious and welcoming environment. Our viewing rooms, loading docks, and common spaces are ideal for collection installations, pop-up exhibitions, fashion shows and presentations, press events, and more.

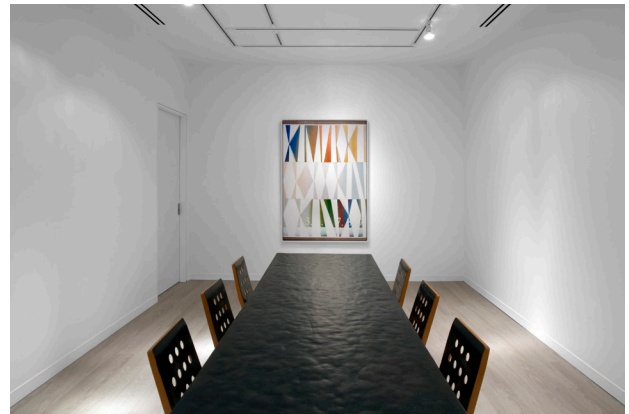
Space Rentals

The range of spaces in our facility ensures that your event will have an appropriate and comfortable ambience. Our viewing rooms can host intimate gatherings, display collections and fashion presentations, or accommodate board meetings. Our loading docks are highly suitable for larger parties and fashion shows with an industrial feel, while our elegant common spaces can be paired with any of the above to suit your needs. Three on-site client kitchens are available for hosting or for food and beverage preparation needs.



Vendor Coordination

We work with a variety of caterers and can assist with any food and beverage requests ranging from casual, light receptions to formal dinner parties. We can coordinate all necessary furniture, linen, and decoration rentals and ensure that your event is properly staffed.



Art Services

If you are interested in hosting an event amidst pieces from your collection, our team of trained art handlers is available for any installation or art handling needs you may have before, during, or after your event.



Accessibility

Our convenient location in Long Island City, adjacent to the Queensboro Bridge, is easily accessible from Manhattan. We are within half a mile of seven subway lines and are close to numerous parking garages.